



Malden Road NW5

Parkheat  
*Sold on Service*





## Malden Road, NW5

### Asking Price £675,000

### Share of Freehold

- Beautifully appointed 2 double bedroom maisonette
- 946 sq ft approx
- Set in impressive white stucco fronted period conversion
- Charming 17ft reception
- Arranged over the top 2 floors (1st and 2nd)
- Contemporary 12ft eat-in kitchen
- Private south east facing terrace
- 2 double bedrooms on the top floor
- Wood flooring and high ceilings
- Near to Hampstead Heath, Kentish Town, South End Green and Belsize Park

Belsize Park/Hampstead  
208 Haverstock Hill  
NW3 2AG  
Sales 020 7431 1234  
Lettings 020 7431 3104  
[nw3@parkheath.com](mailto:nw3@parkheath.com)

South/West Hampstead  
192 West End Lane  
NW6 1SG  
Sales & Lettings  
Tel 020 7794 7111  
[192@parkheath.com](mailto:192@parkheath.com)

Kensal Rise  
54-56 Chamberlayne Rd  
NW10 3JH  
Tel 020 8960 4845  
[kensal@parkheath.com](mailto:kensal@parkheath.com)

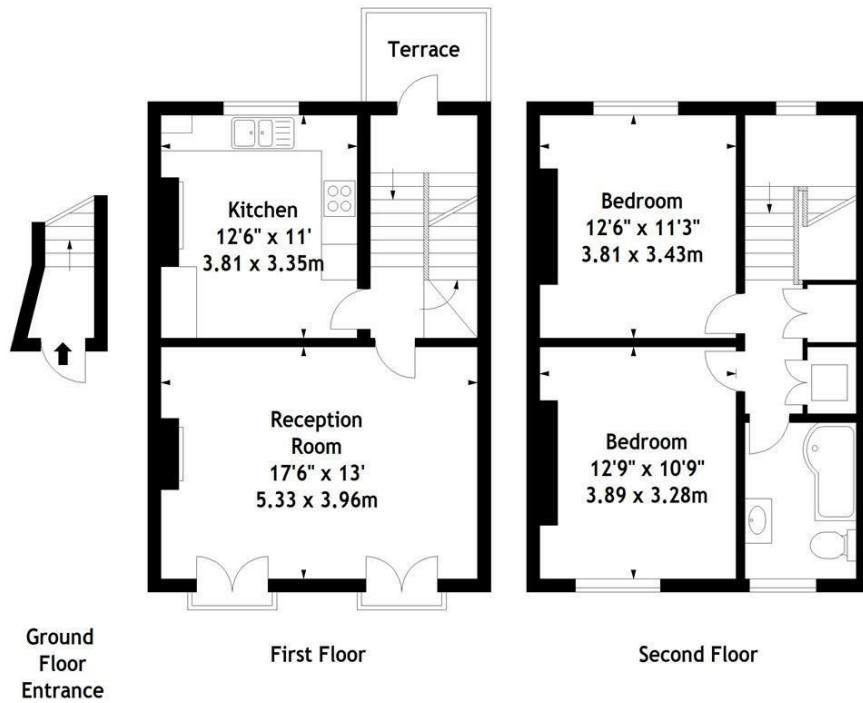
Property Management  
192 West End Lane  
NW6 1SG  
020 7433 6174  
[pm@parkheath.com](mailto:pm@parkheath.com)

**Parkheath**  
*Sold on Service*

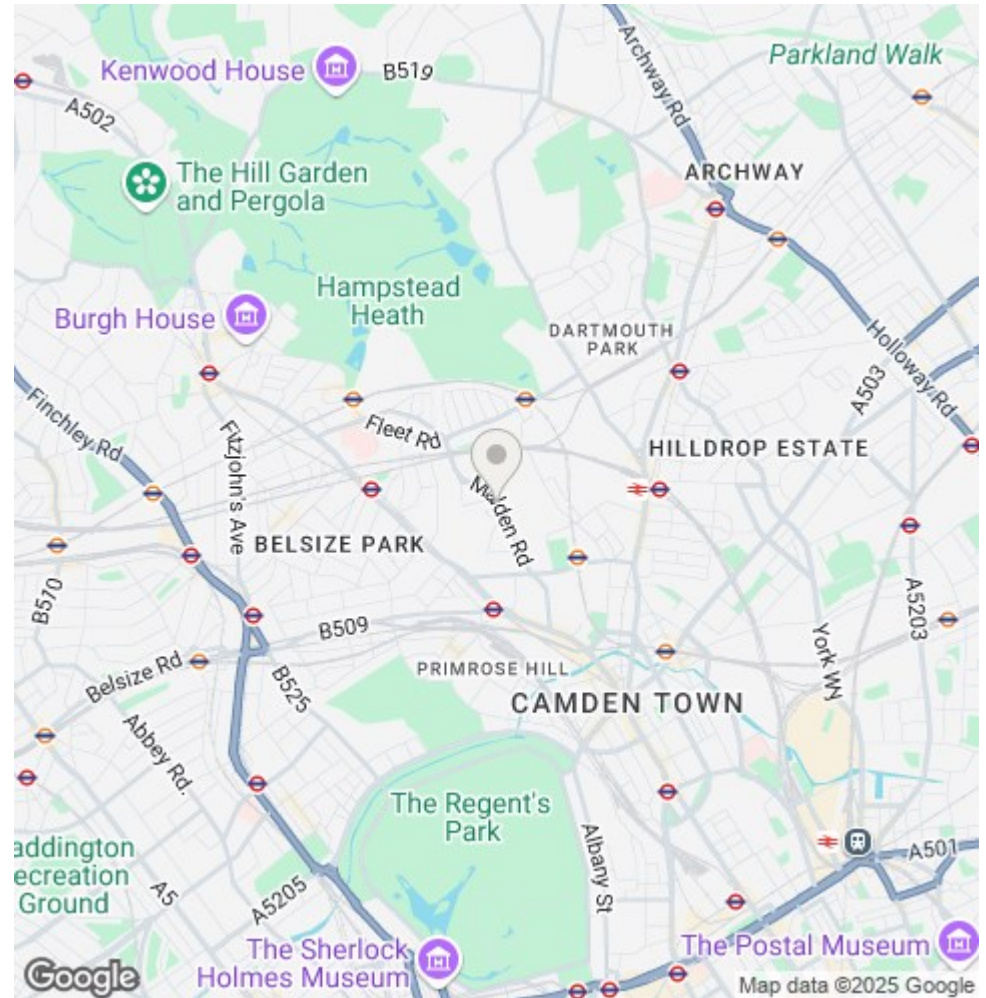
**Camden Tax band D**

[www.parkheath.com](http://www.parkheath.com)

Malden Road, NW5  
Approx. Gross Internal Area  
946 Sq Ft - 87.88 Sq M



Measured in accordance with RICS guidelines. Every attempt is made to ensure accuracy, however all measurements are approximate. This floor plan is for illustrative purposes only and is not to scale. © Datography Ltd 2014 Photographs \* Floorplans \* Virtual Tours Tel: 0845 643 4401 www.datography.com



The particulars do not constitute part of an offer or contract. The particulars, including text, photographs and plans, are for the guidance only of prospective purchasers/tenants and must not be relied upon as statements of fact. The descriptions provided therein represent the opinion of the author and whilst given in good faith should not be construed as statements of fact. Nothing in these particulars shall be deemed a statement that the property is in good condition or otherwise or that any services or facilities are in good working order. All measurements are approximate